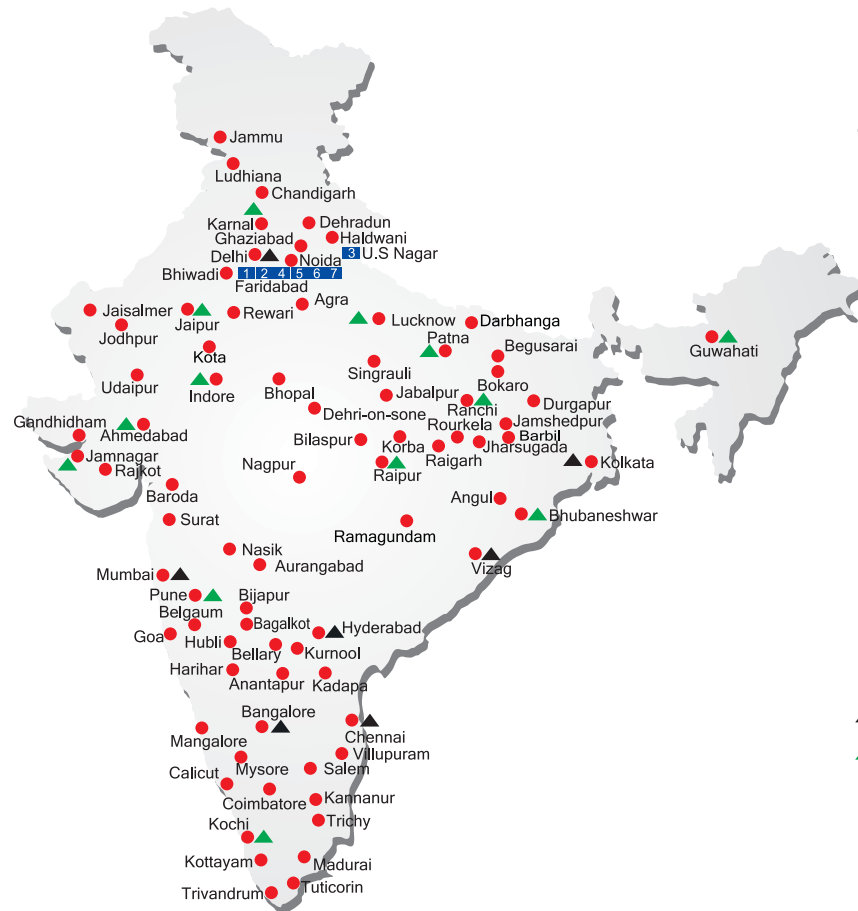


ACE

ALL INDIA NETWORK



SPARE PARTS & SERVICE

ACE has all India Sales and Service network operating out of all the major cities. These outlets are fully equipped to provide genuine spare parts and services by company trained engineers. These outlets are further supported by company officials based at Delhi, Mumbai, Chennai, Kolkatta, Ahmedabad, Surat, Pune, Jaipur, Chandigarh, Ranchi, Raipur, Indore, Bhubneshwar, Lucknow, Jamnagar, Hyderabad, Bangalore, Guwahati, Patna, Vizag & Cochin.

CUSTOMER CARE

TOLL FREE No
1800 1800 004

- WORKS
- ▲ REGIONAL OFFICES
- ▲ AREA OFFICES
- SALES AND SERVICE DEALERS

MARKETING H.Q.

5th Floor, "TDI Center", Jasola, New Delhi - 25
Ph.: +91-11-40549900 (30 Lines), Fax: 40549922
E-mail: marketing@ace-cranes.com, works@ace-cranes.com

REGISTERED OFFICE

Dudhola Link Road, Dudhola, Palwal-121102, Haryana
Ph.: +91-1275-280111, Fax: +91-1275-280133
CIN : L74899HR1995PLC053860

MUMBAI OFFICE

31, "Kalpataru Court", Chembur, Mumbai - 74
Ph.: +91-22-25206846, 25207070, Telefax: 25207071
E-mail: acemumbai@ace-cranes.com

KOLKATA OFFICE

"Forma Towers" 84-A, Second Floor, AJC Bose Road, Kolkata - 14. Ph.: +91-33-65012050
E-mail: acekolkatta@ace-cranes.com

CHENNAI OFFICE

1st Floor, "Alsa Regency", 165, Eldams Road, Alwar Pet, Chennai - 18
Ph.: +91-44-24314253, Telefax: 24314252
E-mail: acechennai@ace-cranes.com



ACE

Action Construction Equipment Ltd.

Contact:



ACE reserves the right to alter any specifications without prior notice. Dimensions, weights & capacities mentioned herein are variable by ± 5%. Accessories if shown are not part of the Standard Equipment.



www.ace-cranes.com



15 XWE

Hydraulic Mobile Crane

15 Tonnes Capacity
Rough terrain and rugged articulated pick n move crane.

ACE INDIA'S NO. 1
MOBILE & TOWER CRANE CO.

- Low Center of Gravity
- Slotted boom
- Self Adjusting hook block
- Ergonomically designed Cabin

Nothing beats an ACE

Specifications

15XWE

LIFTING CAPACITY (Free on wheels)	15 Tonnes	HYDRAULIC SYSTEM	● Gear / Intra Vane type Main Pump.
ENGINE	Simpson's S433(I) F1 (CEV BS-III), 4 cylinder, water cooled diesel engine or suitable equivalent engine		● Four spools control valve with built in Relief valve (heavy duty)
Rated Power	48 BHP (36KW) at 2200 RPM	TELESCOPIC BOOM	● Suction line has 100 mesh size Strainer while return line is fitted with 25 micron full flow filter
TRANSMISSION	Heavy duty, sliding mesh with 6 forward and 2 reverse speeds with high low range selector.		● Two double acting lift cylinders, two double acting steering cylinders and one double acting extension extension cylinder
Clutch	Heavy duty, single, dry friction, wire woven clutch plate with diaphragm type pressure plate.	Telescoping Time	12 Seconds
Top Speed	28 KMPH Without load	BOOM LUFFING	
STEERING	Lever operated with 55° articulation on either side and turning radius of 6.5 Mtrs. (approx) on outer rear wheels	Range Time	-2° to +53° 18 Seconds
BRAKES	Pneumatically assisted hydraulic brakes, Front and rear brakes are actuated through a single pedal. Parking brake is provided.	HOIST	Winch is driven by hydraulic motor and fitted with self adjusting hook block employing 4 falls of 13mm dia. Rope.
		Hoist Speed	50 Mtrs./Min. (Line speed)

Specifications

15XWE

FLUID CAPACITIES		STANDARD EQUIPMENT	● ROPS fully enclosed wide view cabin with rotomould canopy.
Air Cleaner	0.75 Ltrs.		● Front tyre protector.
Engine	8.00 Ltrs.		● Front and rear work lights.
Fuel Tank	45.00 Ltrs.		● Reflectors & rear view mirror.
Hydraulic Tank	125.00 Ltrs.	● Tool kit.	● Gauges :-
Transmission	37.00 Ltrs.		a) Water temperature.
ELECTRICAL SYSTEM	12V, Negative earth with 35 Amp. alternator and 88 Amp hr. battery		b) Engine oil pressure.
TYRES		OPTIONAL EQUIPMENT	● Fly jib
Front	11.00 x 20 – 16 PR (4 Nos.)		● Steering Wheel in lieu of lever type steering
Rear	14.00 x 25 – 12 PR (2 Nos.)	● Spark arrestor	● 3 part slotted boom (fully hydraulic 15.0 mtrs. height)
SAFETY			● 4 part slotted boom, 3 part hydraulically actuated & Synchronized and 4th part power extended (15.3 mtrs or 18.0 mtrs height)
			● Over Hoist hydraulic cutoff
			● Safe load indicator / LMI
		OPERATING WEIGHT	11600 Kgs.



1 SELF ADJUSTING HOOK BLOCK
Provides for safe boom extension and prevents damage of wire rope.



2 ROPS CABIN
Wide view ROPS cabin with curved windscreen for better visibility.



3 MAIN FRAME
Heavy duty & robust construction.



4 INCREASED VISIBILITY
Bigger size front windscreen and re-routing of hoses provide much better front visibility.



5 LIFT CYLINDERS
Heavy duty lift cylinders ensure higher lifting capacities.



6 GROUND CLEARANCE
High ground clearance of 400mm for easier rough terrain operation.



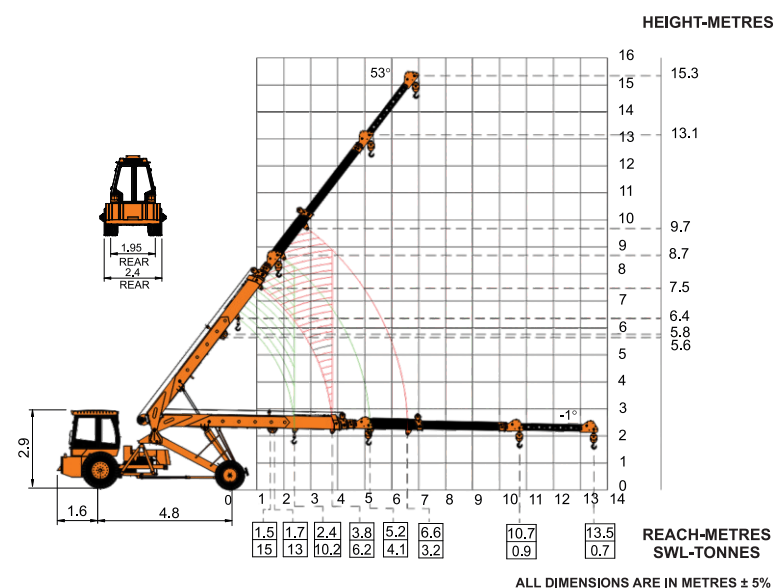
7 STEERING CYLINDERS
700 mm stroke cylinders ensure proper steering even in loose, sandy & rocky terrains.



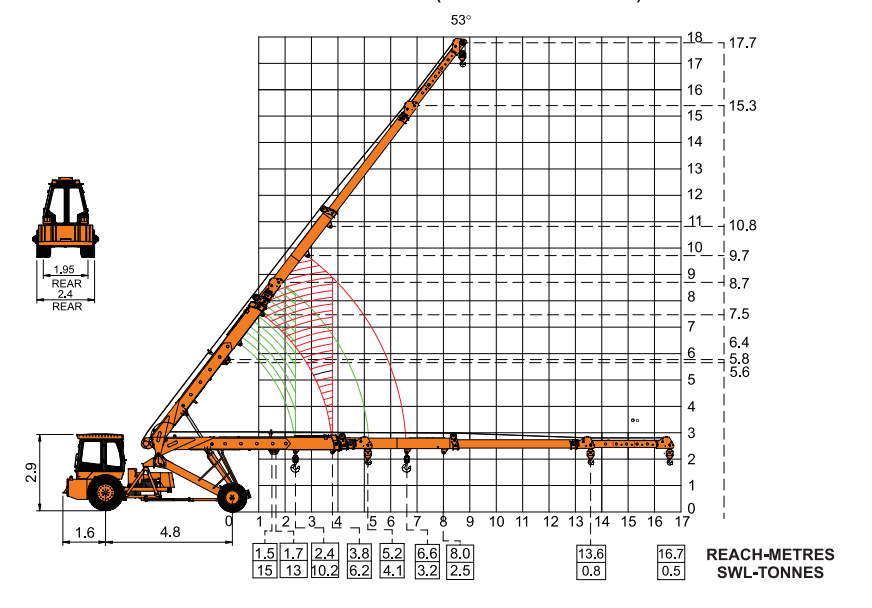
8 SLOTTED BOOM
For easier load positioning

ACE advantages

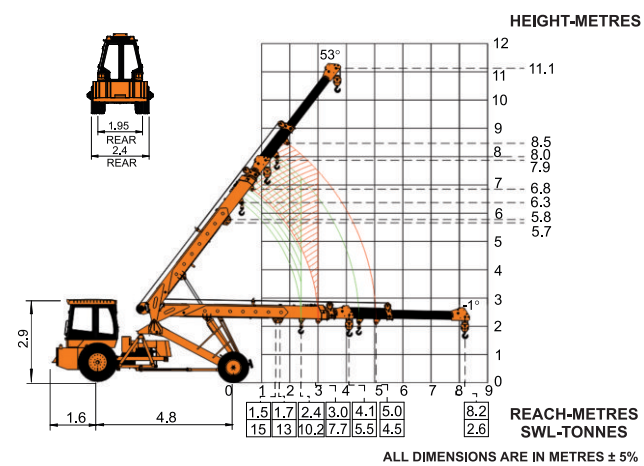
ACE 15XWE MODEL CRANE FITTED WITH 3PART + 1MANUAL SLOTTED BOOM (15.3 METERS HEIGHT)



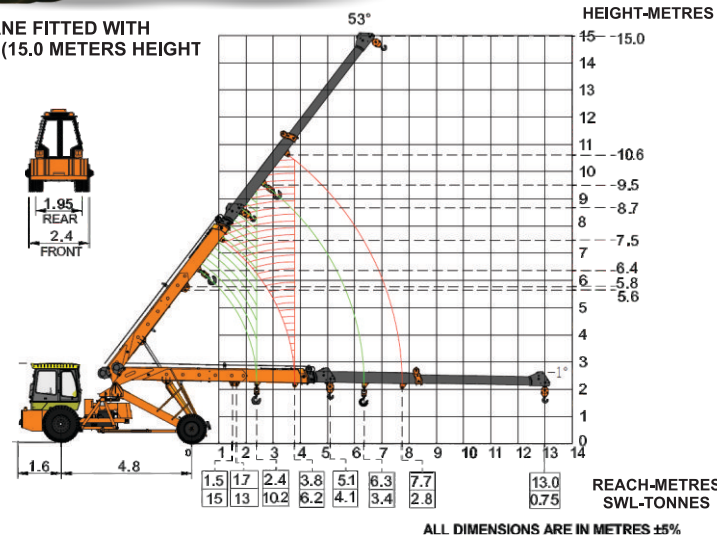
ACE 15XWE MODEL CRANE FITTED WITH 3PART + 1MANUAL SLOTTED BOOM (17.7 METERS HEIGHT)



ACE 15XWE MODEL CRANE FITTED WITH 3 PART SLOTTED BOOM (11.1 METERS HEIGHT)



ACE 15XWE MODEL CRANE FITTED WITH 3 PART SLOTTED BOOM (15.0 METERS HEIGHT)



ALL DIMENSIONS ARE IN METRES ± 5%

ALL DIMENSIONS ARE IN METRES ± 5%

ALL DIMENSIONS ARE IN METRES ± 5%